

# 宗 地 图

XDG(XS)-2019-20号

单位: m · m<sup>2</sup>

H51H015016 H51H015017

320205106201GB00200

北

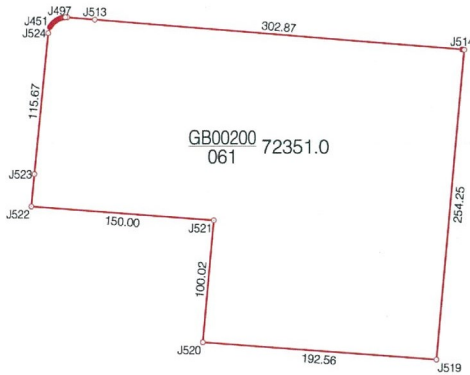


创业路

怀仁路

金港大道

银杏西路



- |                 |                 |
|-----------------|-----------------|
| J451—J452; 0.11 | J452—J453; 0.26 |
| J453—J454; 0.26 | J454—J455; 0.26 |
| J455—J456; 0.26 | J456—J457; 0.26 |
| J457—J458; 0.26 | J458—J459; 0.26 |
| J459—J460; 0.26 | J460—J461; 0.26 |
| J461—J462; 0.26 | J462—J463; 0.26 |
| J463—J464; 0.26 | J464—J465; 0.26 |
| J465—J466; 0.26 | J466—J467; 0.26 |
| J467—J468; 0.26 | J468—J469; 0.26 |
| J469—J470; 0.26 | J470—J471; 0.26 |
| J471—J472; 0.26 | J472—J473; 0.26 |
| J473—J474; 0.26 | J474—J475; 0.26 |
| J475—J476; 0.26 | J476—J477; 0.26 |
| J477—J478; 0.26 | J478—J479; 0.26 |
| J479—J480; 0.26 | J480—J481; 0.26 |

- |                  |                  |
|------------------|------------------|
| J481—J482; 0.26  | J482—J483; 0.26  |
| J483—J484; 0.26  | J484—J485; 0.26  |
| J485—J486; 0.26  | J486—J487; 0.26  |
| J487—J488; 0.26  | J488—J489; 0.26  |
| J489—J490; 0.26  | J490—J491; 0.26  |
| J491—J492; 0.26  | J492—J493; 0.26  |
| J493—J494; 0.26  | J494—J495; 0.26  |
| J495—J496; 0.26  | J496—J497; 0.26  |
| J497—J498; 0.26  | J498—J499; 0.26  |
| J499—J500; 0.26  | J500—J501; 0.26  |
| J501—J502; 0.26  | J502—J503; 0.26  |
| J503—J504; 0.26  | J504—J505; 0.26  |
| J505—J506; 0.26  | J506—J507; 0.19  |
| J507—J508; 0.83  | J508—J509; 0.26  |
| J509—J510; 0.25  | J510—J511; 0.21  |
| J511—J512; 1.77  | J512—J513; 22.28 |
| J514—J515; 0.80  | J515—J516; 0.58  |
| J516—J517; 0.26  | J517—J518; 0.32  |
| J522—J523; 26.58 | J524—J451; 4.93  |

1:4000

绘图员: 张科

审核员: 华建国

2019年9月16日